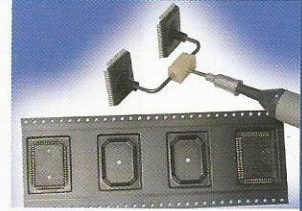


Custom Made Vacuum Tips For Any Application

Custom And Semi-Custom Vacuum Handling Tips

Many of our customers' special handling needs can be solved with our semi-custom or custom handling tip. Some of the custom tips developed in the past are shown on the right side bar.



Dual Cup Handling Tips

These tips are application specific. You specify the end to end spacing, as well as the size and material of the vacuum cups to be used. Typical applications are for items that are elongated or where an opening needs to be bridged. These tips can typically be used with all of our vacuum handling tools.

Three Cup Tips

These tips are application specific. You specify the triangular area to be formed, as well as the size and material of the vacuum cups used. Typical applications are for items that are large odd shaped or where an opening needs to be bridged. These tips can typically be used with all of our vacuum handling tools.

Extended Reach Tips

We can make vacuum tips with extended reaches up to 18 inches in length.

Right Angle Tips

We can form the metal probe section to any angle up to 90 degrees.

Custom Handling tips

Custom handling tips typically require drawing or parts from the customer describing the exact dimensions of the part to be handled or the vacuum tip to be manufactured. Our manufacturing department will then work with your engineers to determine the feasibility and cost of the vacuum tip.



Procedure of Semi-Custom and Custom Tips

Semi-Custom Tips require you to specify the end to end spacing as well as the size and material of the vacuum cups to be used.

Custom Tips require you to send samples of your part(s), drawings, along with exact dimensions and description of your application to our Technical Applications Department at:

Virtual Industries, Inc.
Attn: Technical Applications Department
2130 Victor Place
Colorado Springs, CO 80915



Virtual Industries, Inc. will respond with a detailed recommendation and quote for your order. Please allow up to two weeks.

Requirements

1. A VALID credit card OR purchase order number with a hard copy must be submitted showing the full value and payment of the custom order.
2. Full name and phone number of person(s) testing the unit(s).
3. If not a current customer, credit references must be provided (unless a credit card number is provided).

Conditions

1. There are no returns or refunds on custom orders.

